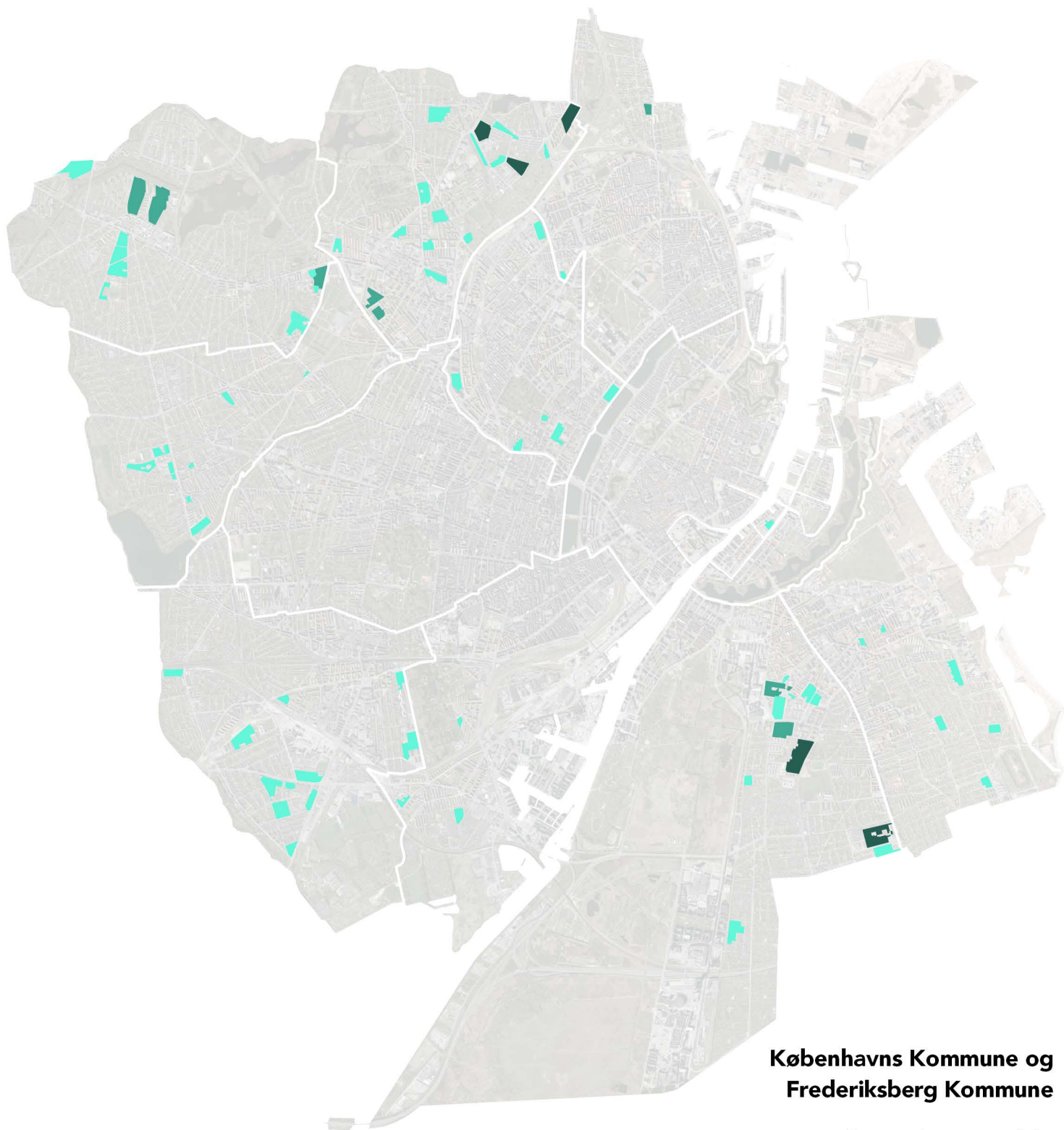


### 5.1.1. Københavns Kommune INFILL



### Københavns Kommune og Frederiksberg Kommune

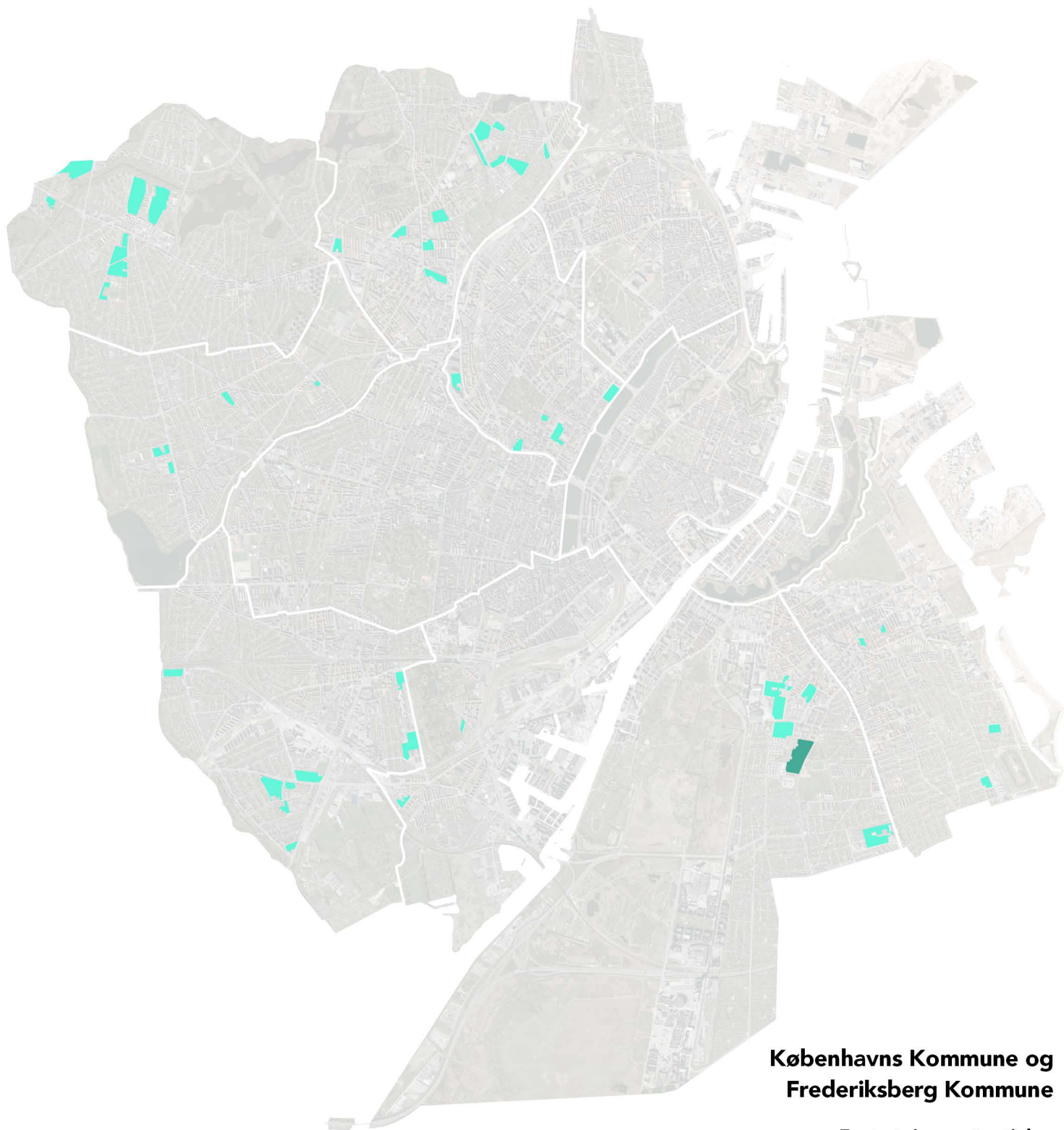
#### Fortætningspotentiale

600 - 6.000 kvm

6.000 - 12.000 kvm

12.000 - 18.000 kvm

## 5.1.2. Københavns Kommune ONFILL



### Københavns Kommune og Frederiksberg Kommune

#### Fortætningspotentiale

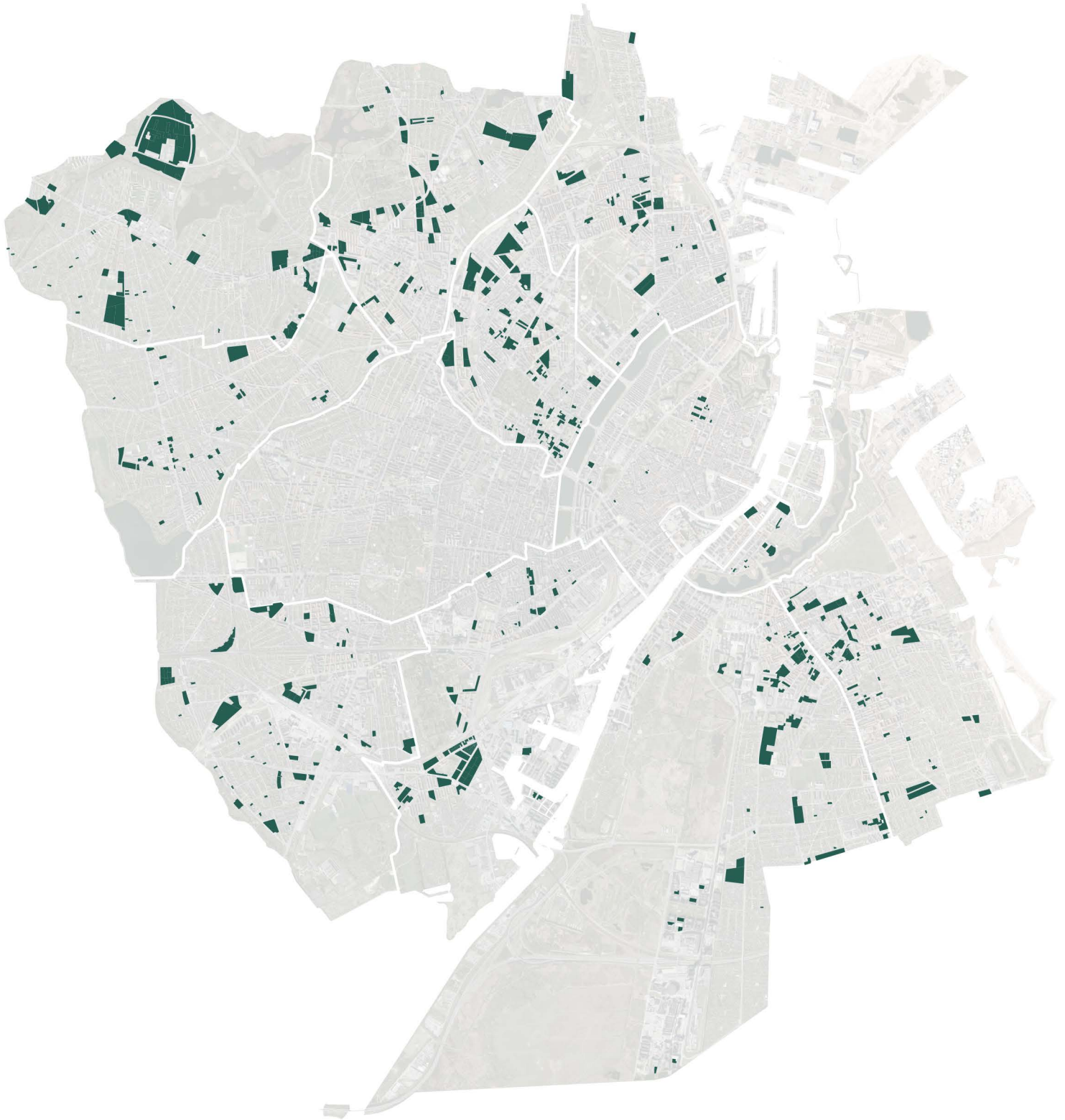
600 - 6.000 kvm 

6.000 - 12.000 kvm 

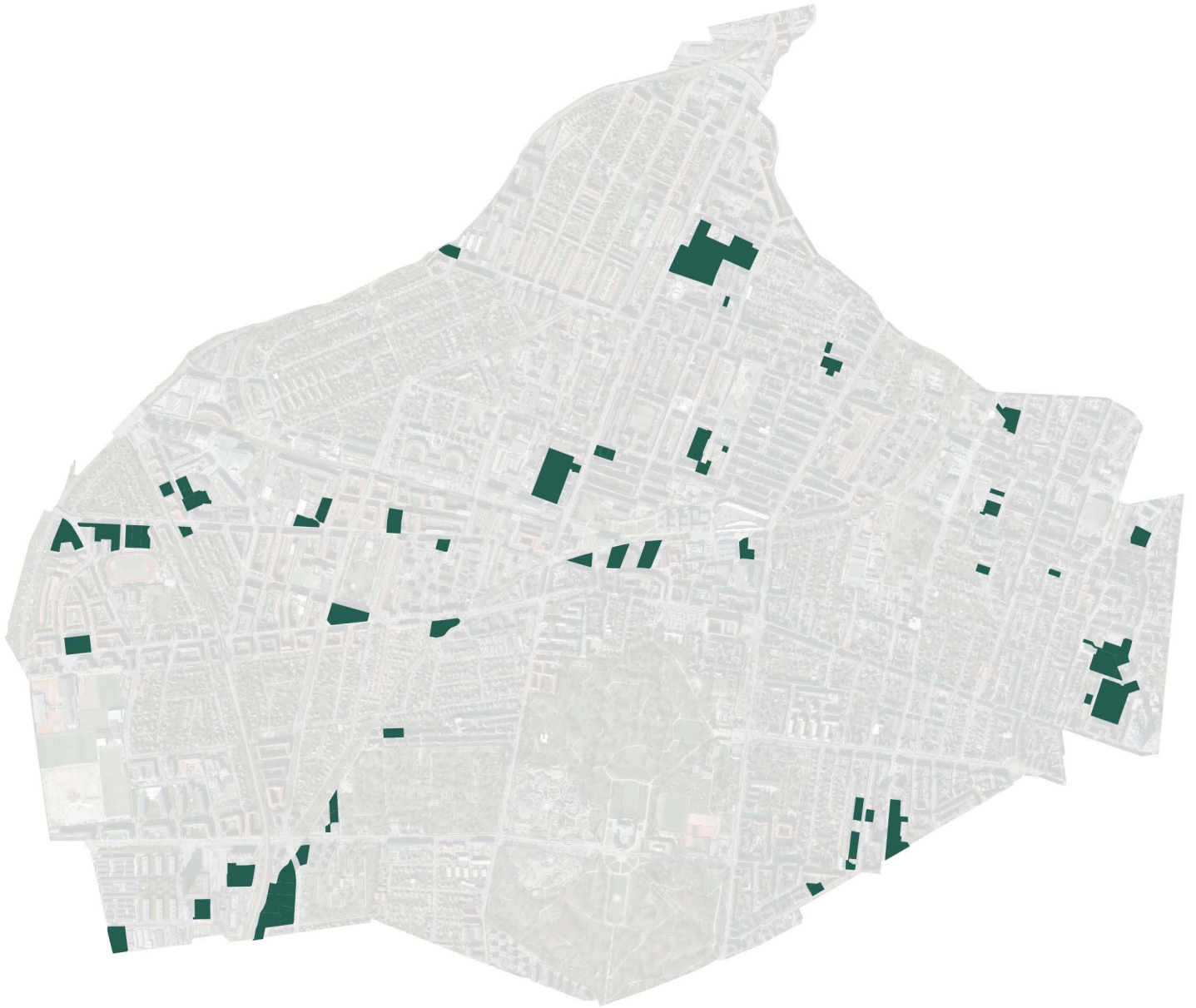
12.000 - 18.000 kvm 



### 5.1.3. Københavns Kommune FRAVALGT



### 5.2.1. Frederiksberg Kommune FRAVALGT



## 5.2.2. Frederiksberg Kommune INFILL



### Frederiksberg Kommune

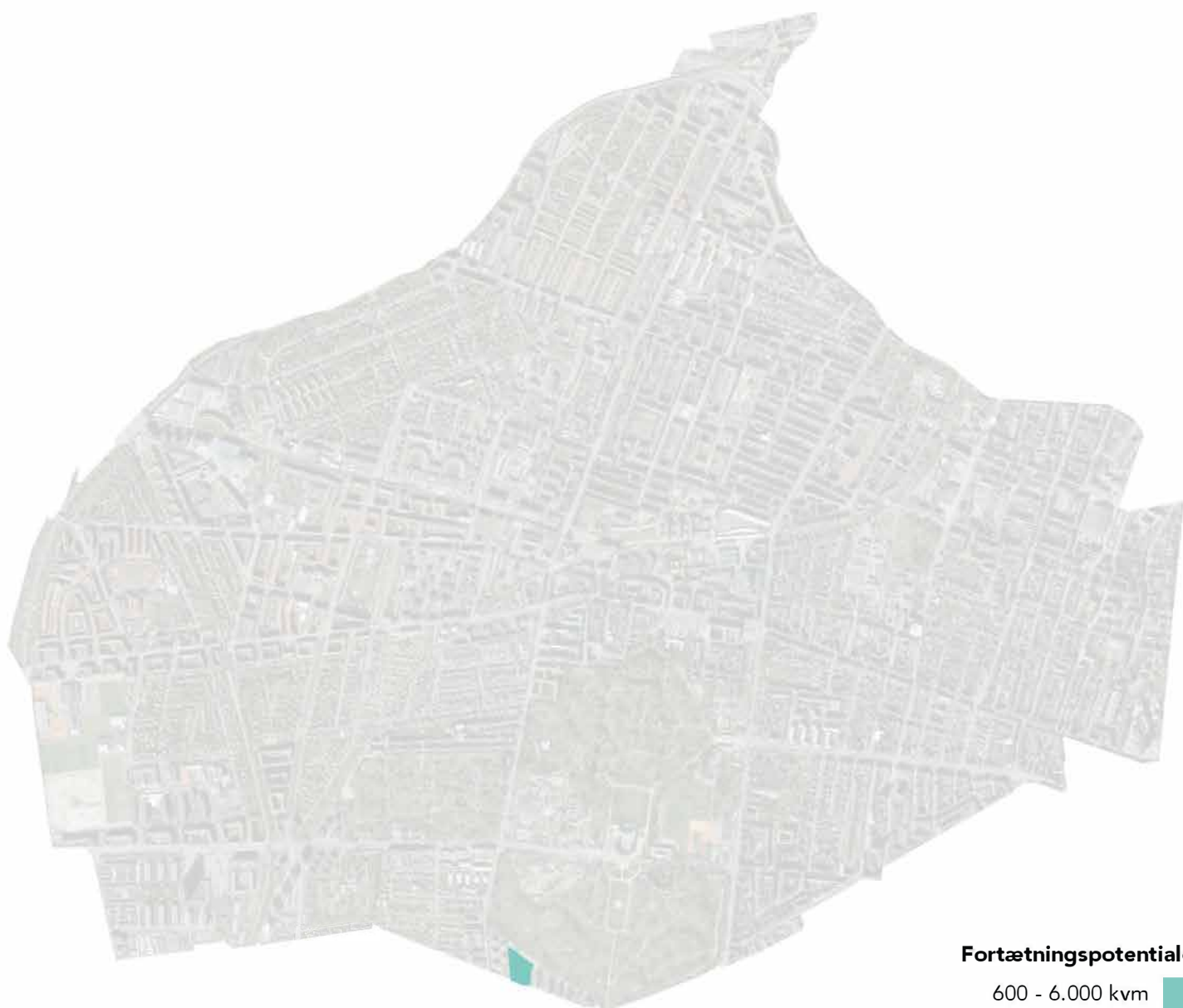
#### Fortætningspotentiale

600 - 6.000 kvm 

6.000 - 12.000 kvm 

12.000 - 18.000 kvm 

### 5.2.3. Frederiksberg Kommune ONFILL



#### Fortætningspotentiale

600 - 6.000 kvm

6.000 - 12.000 kvm

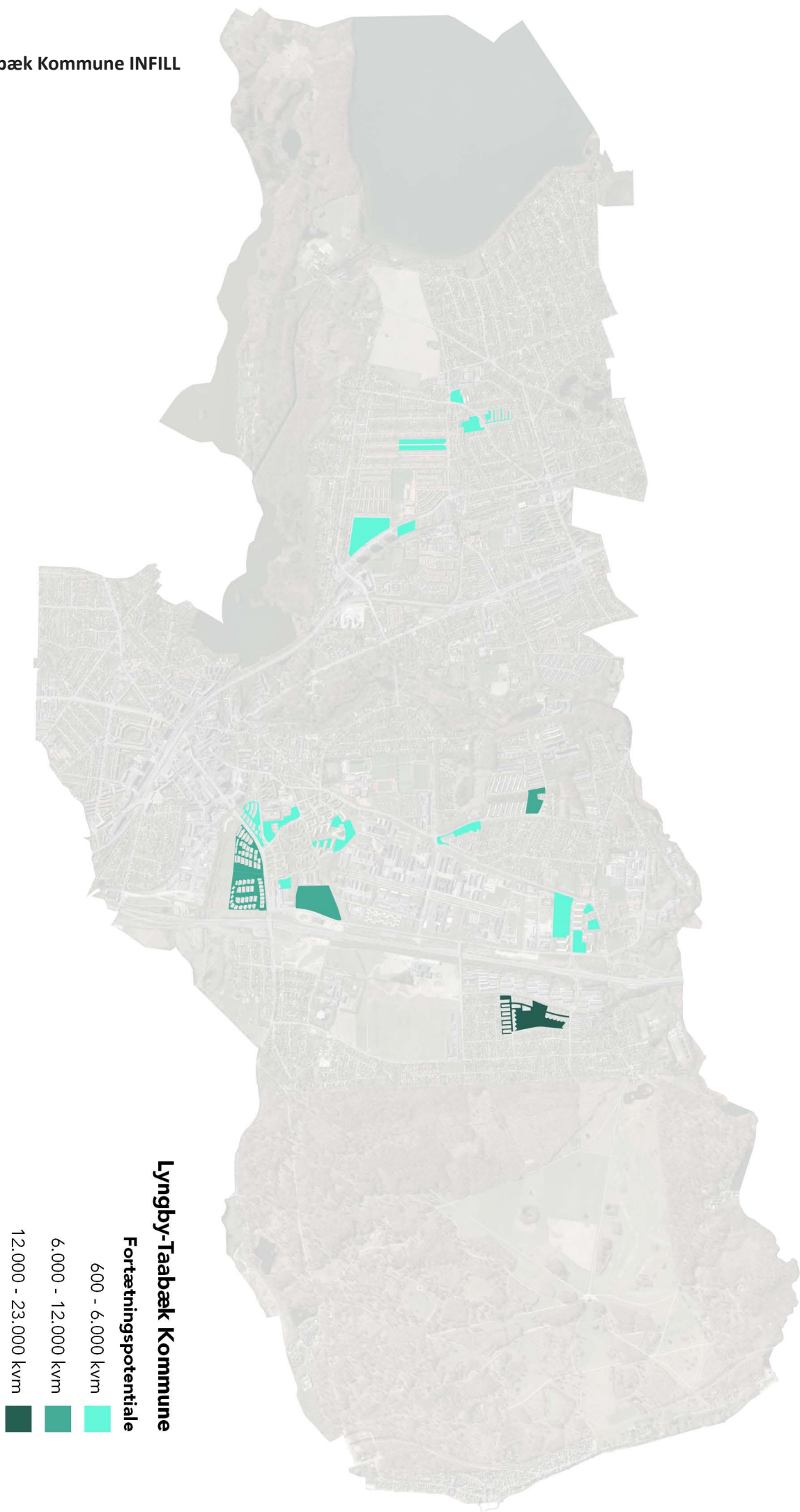
12.000 - 18.000 kvm



### 5.3.1. Gentofte Kommune FRAVALGT

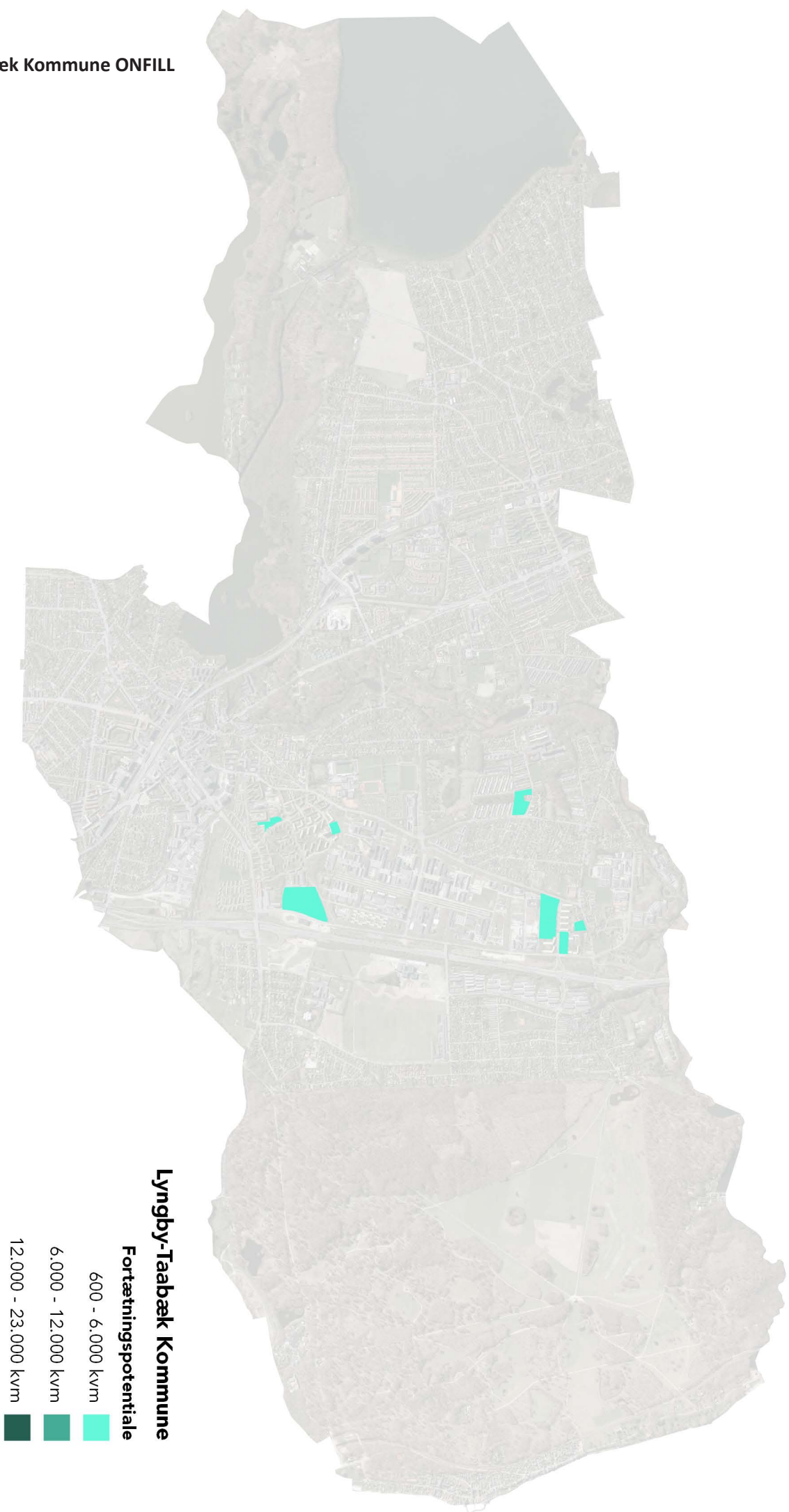


### 5.4.1. Lyngby-Taarbæk Kommune INFILL

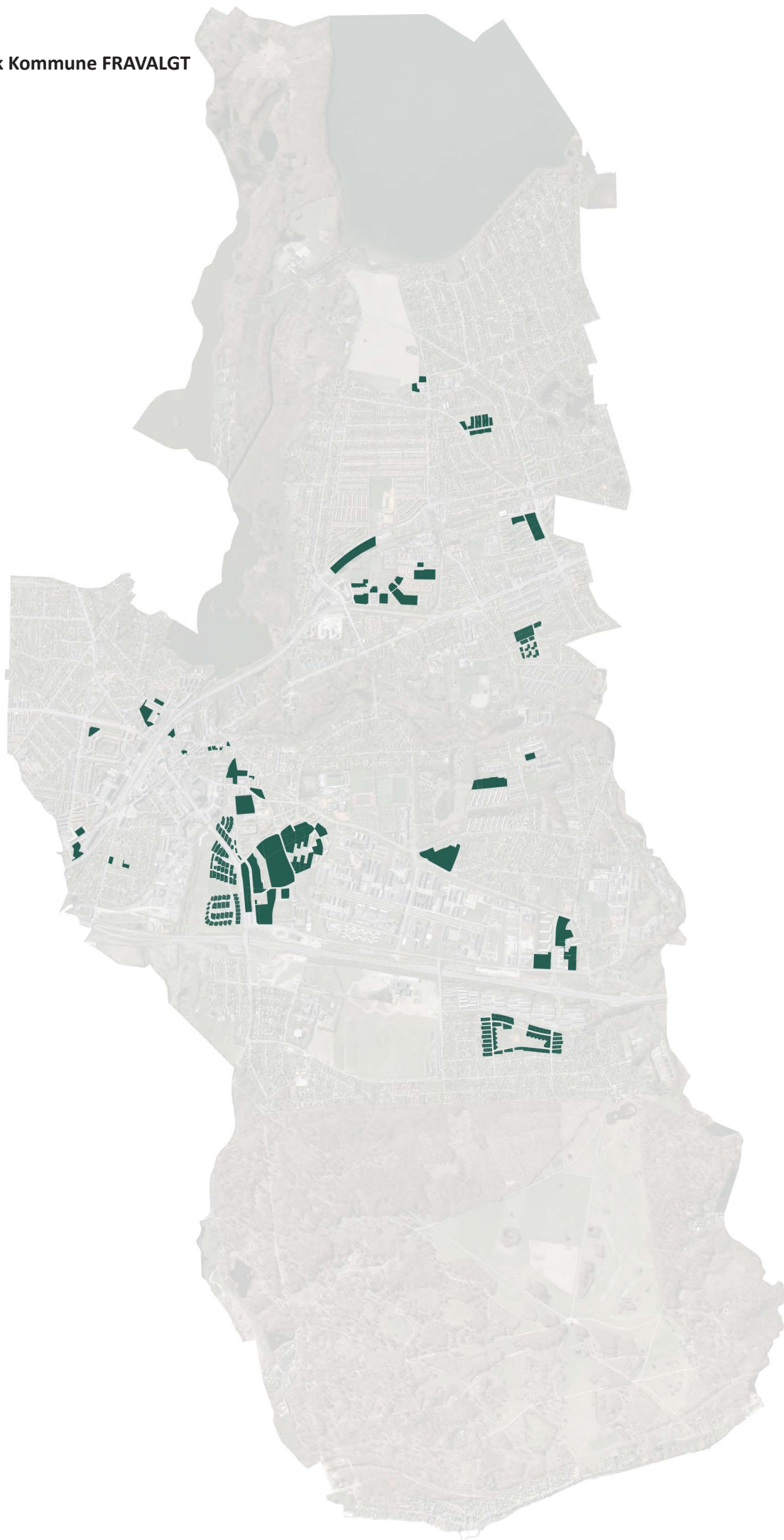




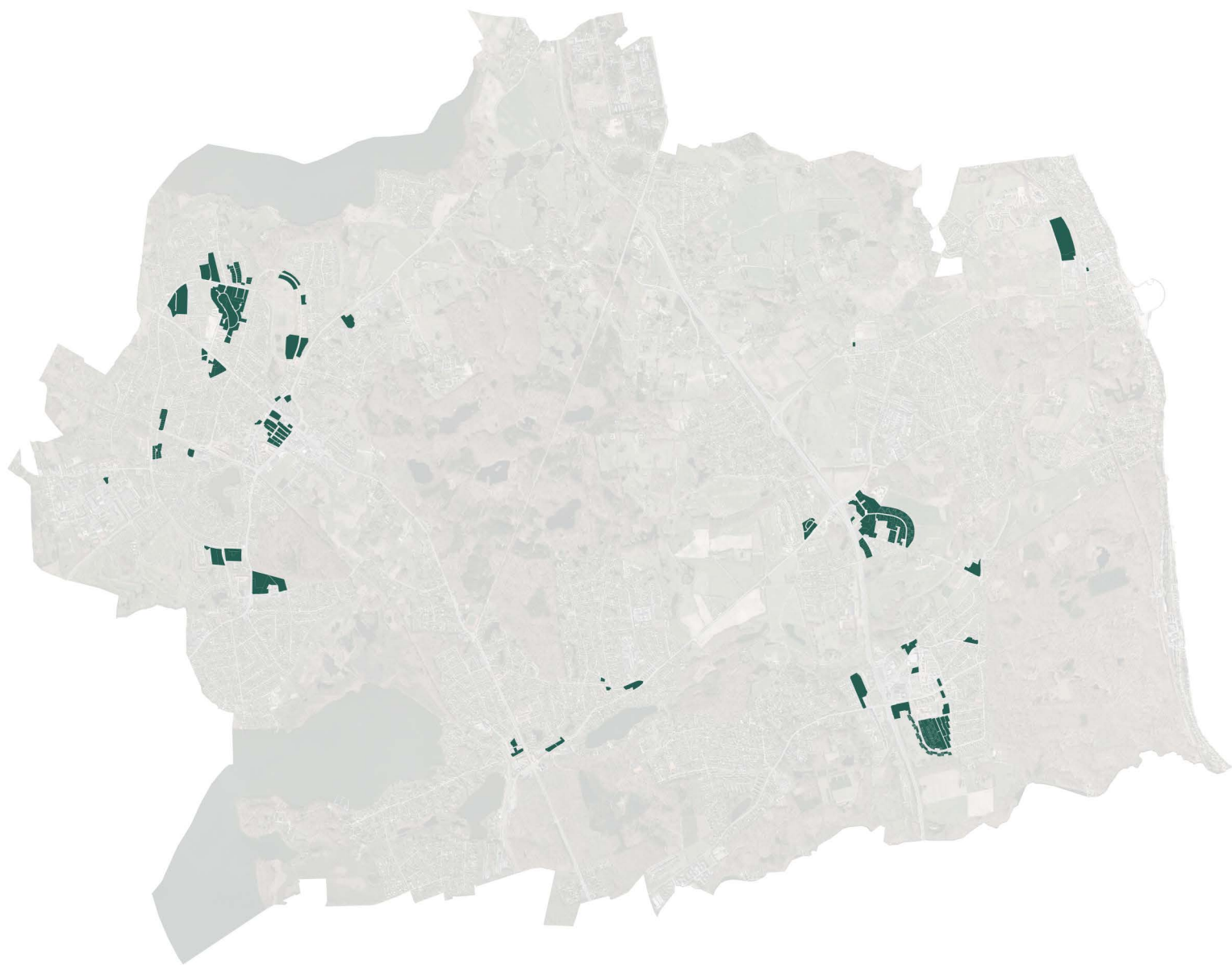
## 5.4.2. Lyngby-Taarbæk Kommune ONFILL



### 5.4.3. Lyngby-Taarbæk Kommune FRAVALGT

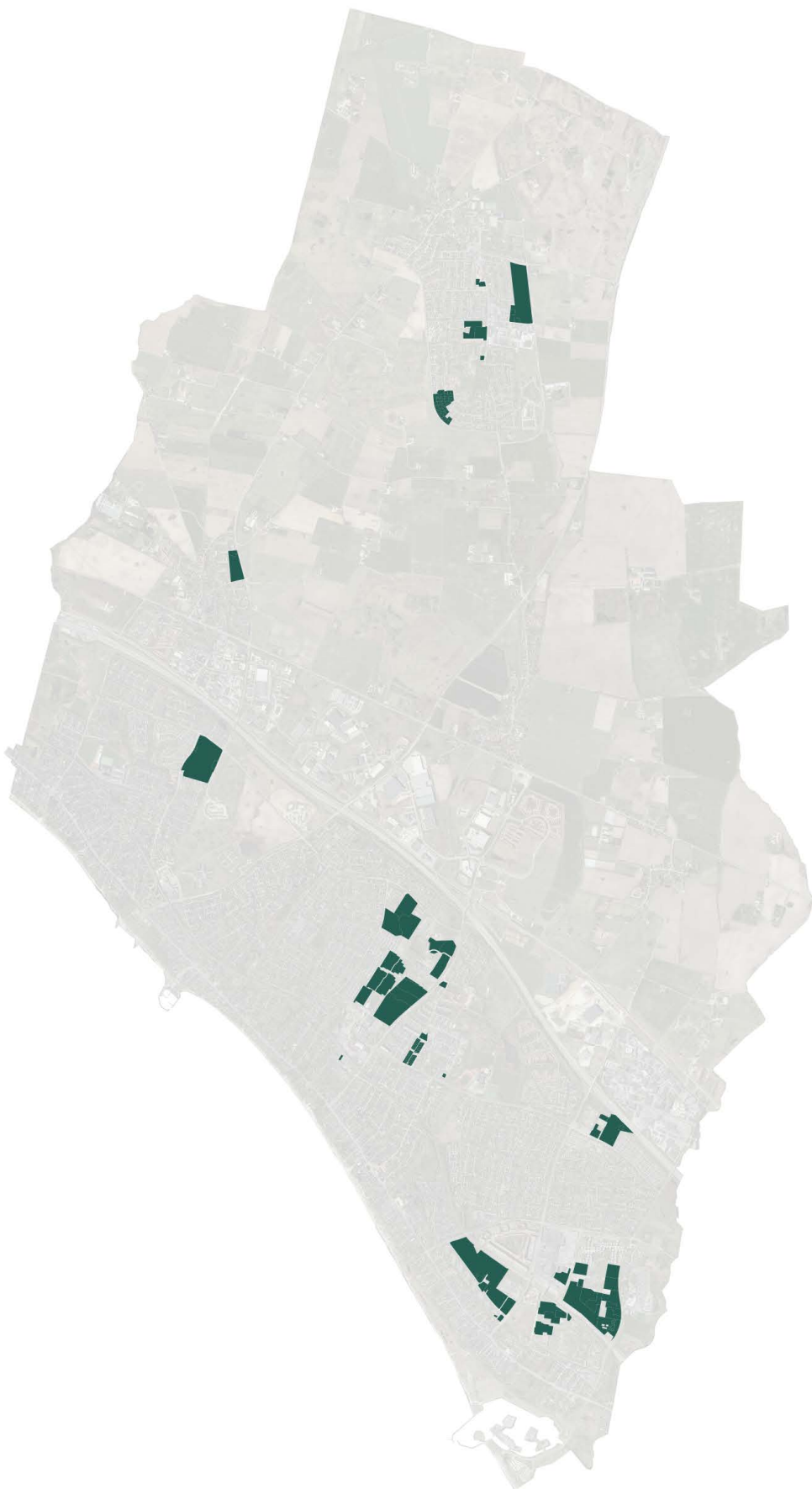


### 5.5.1. Rudersdal Kommune FRAVALGT

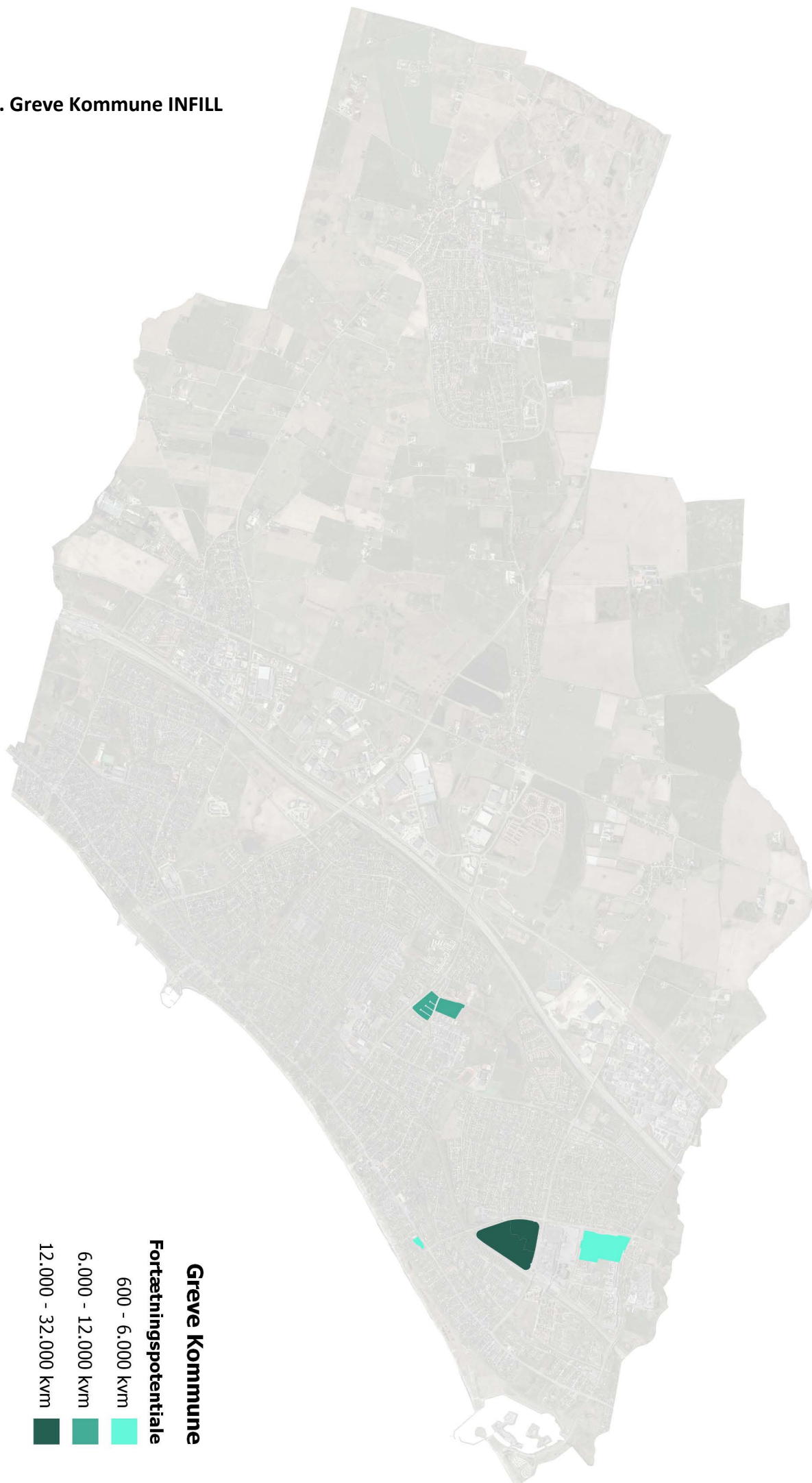




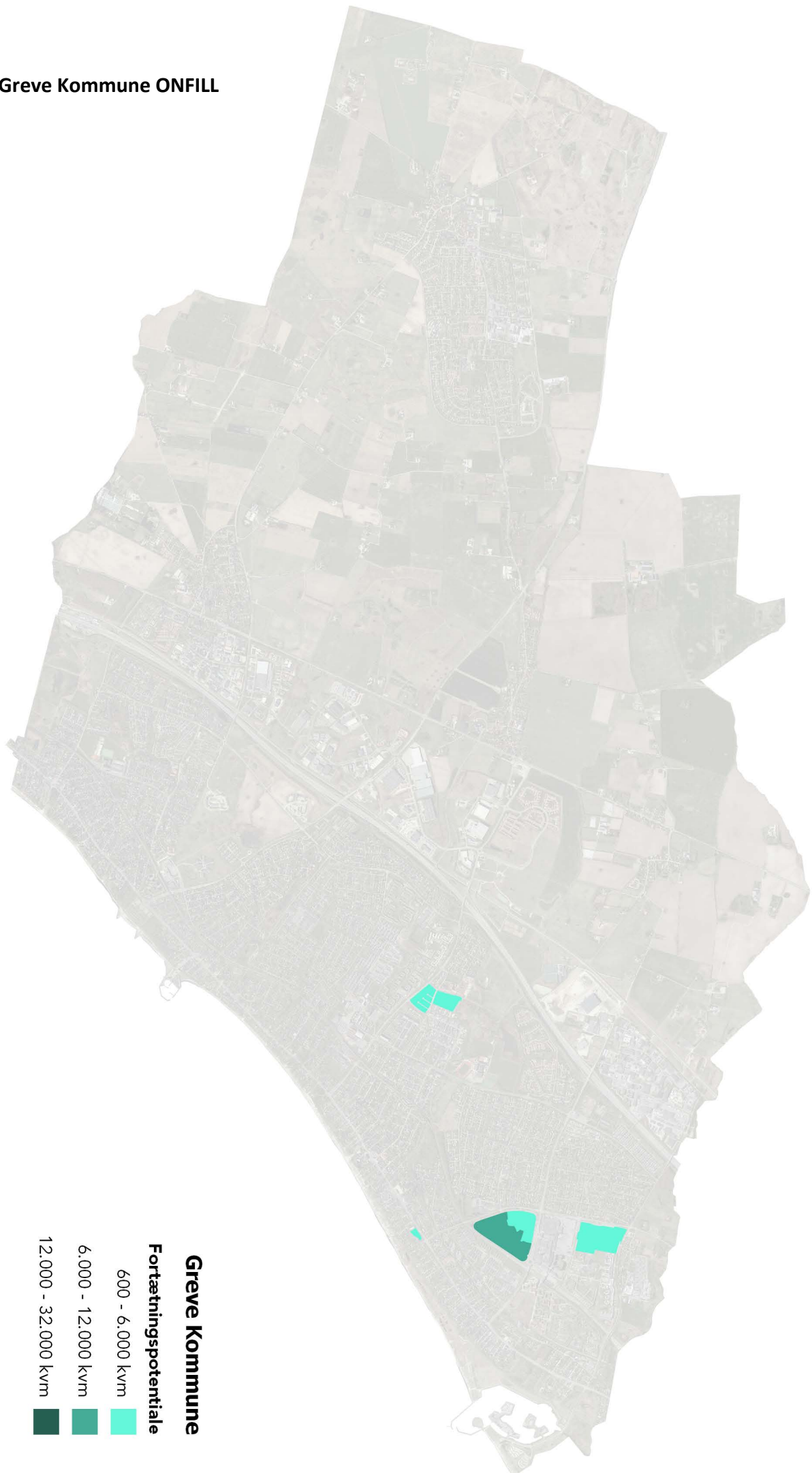
### 5.6.1. Greve Kommune FRAVALGT



### 5.6.2. Greve Kommune INFILL

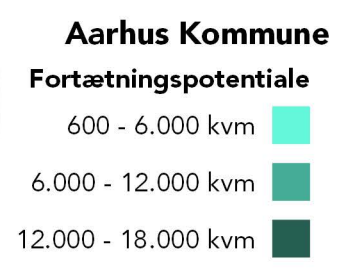
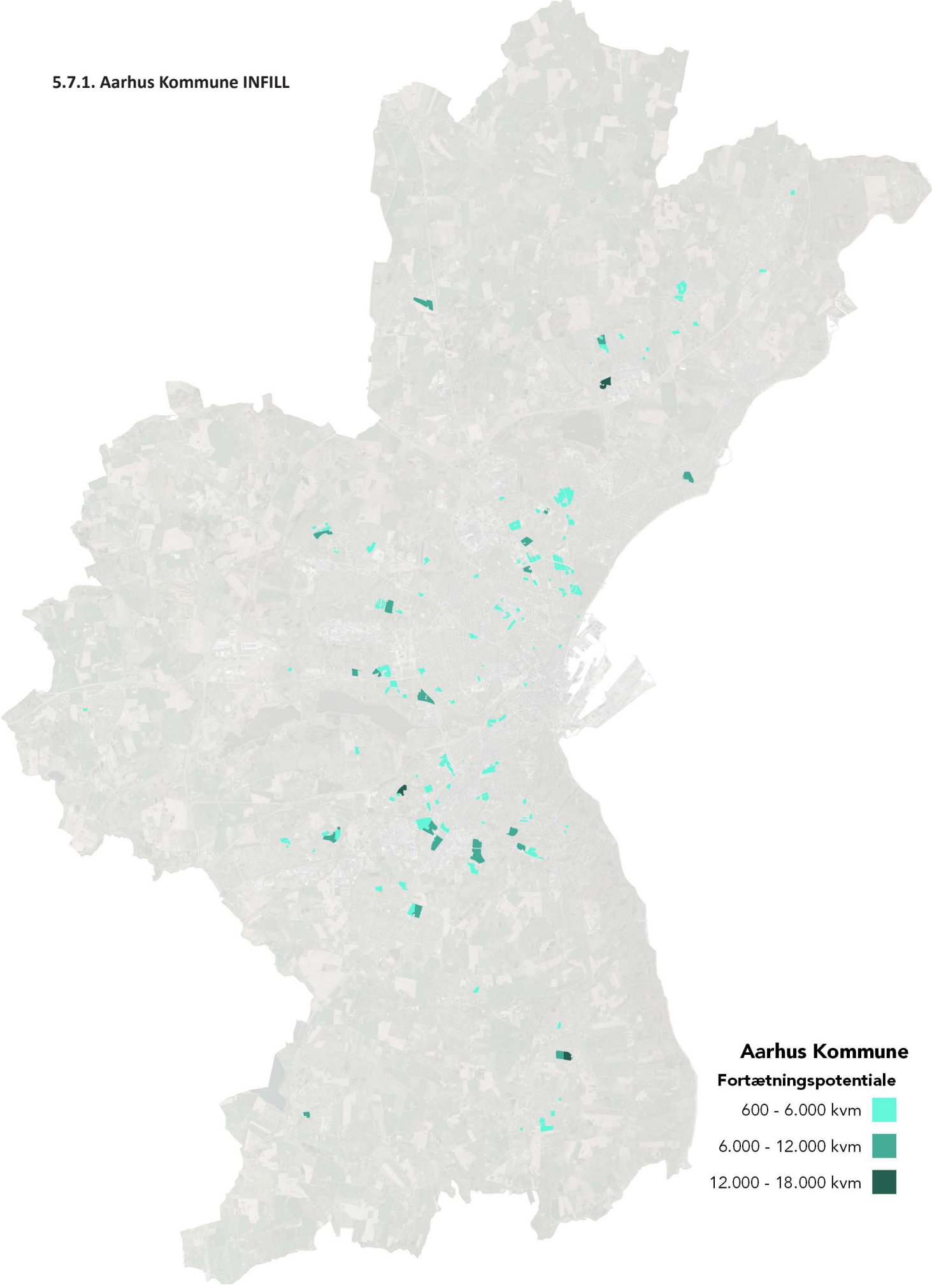


### 5.6.3. Greve Kommune ONFILL

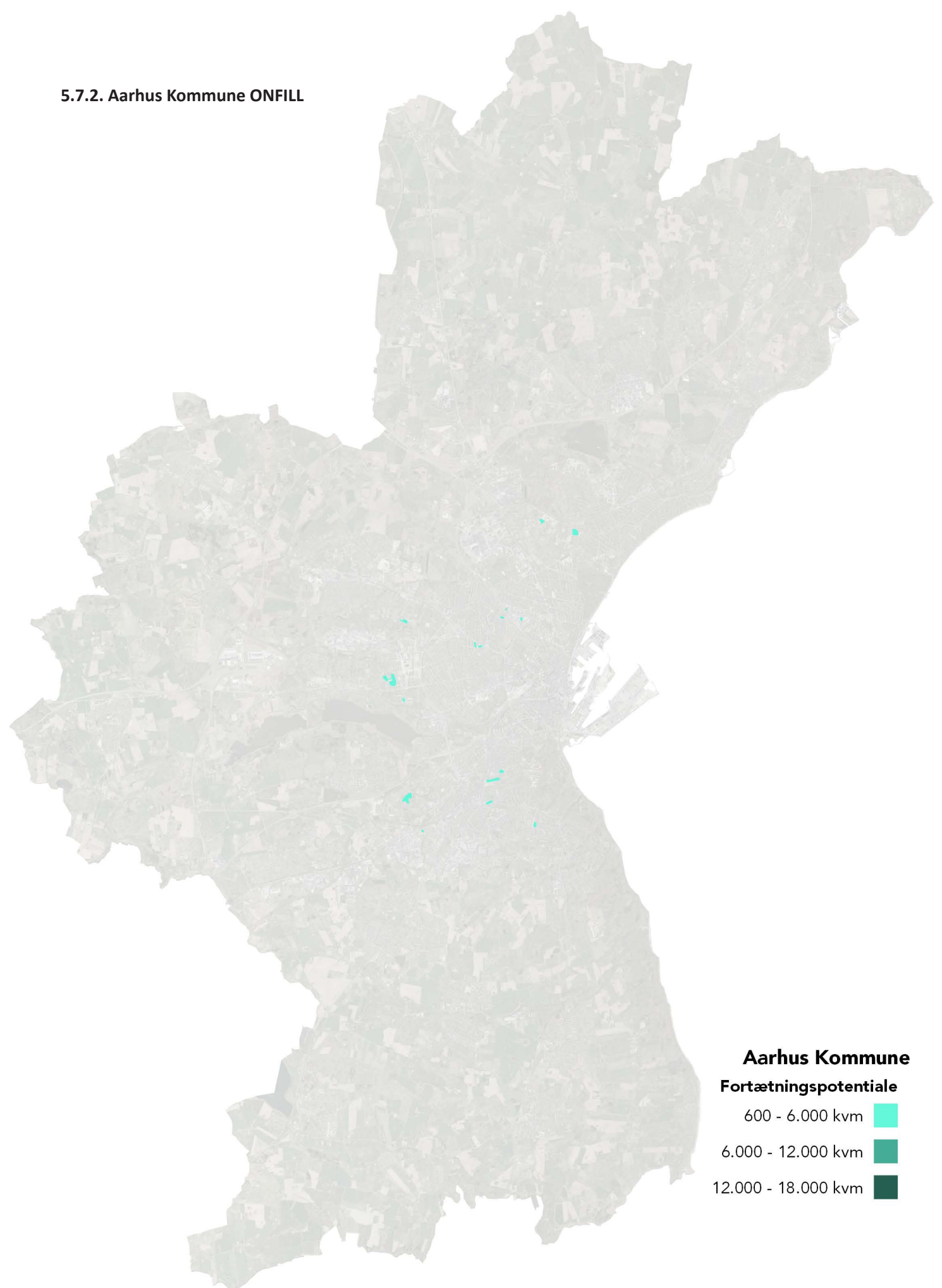




### 5.7.1. Aarhus Kommune INFILL

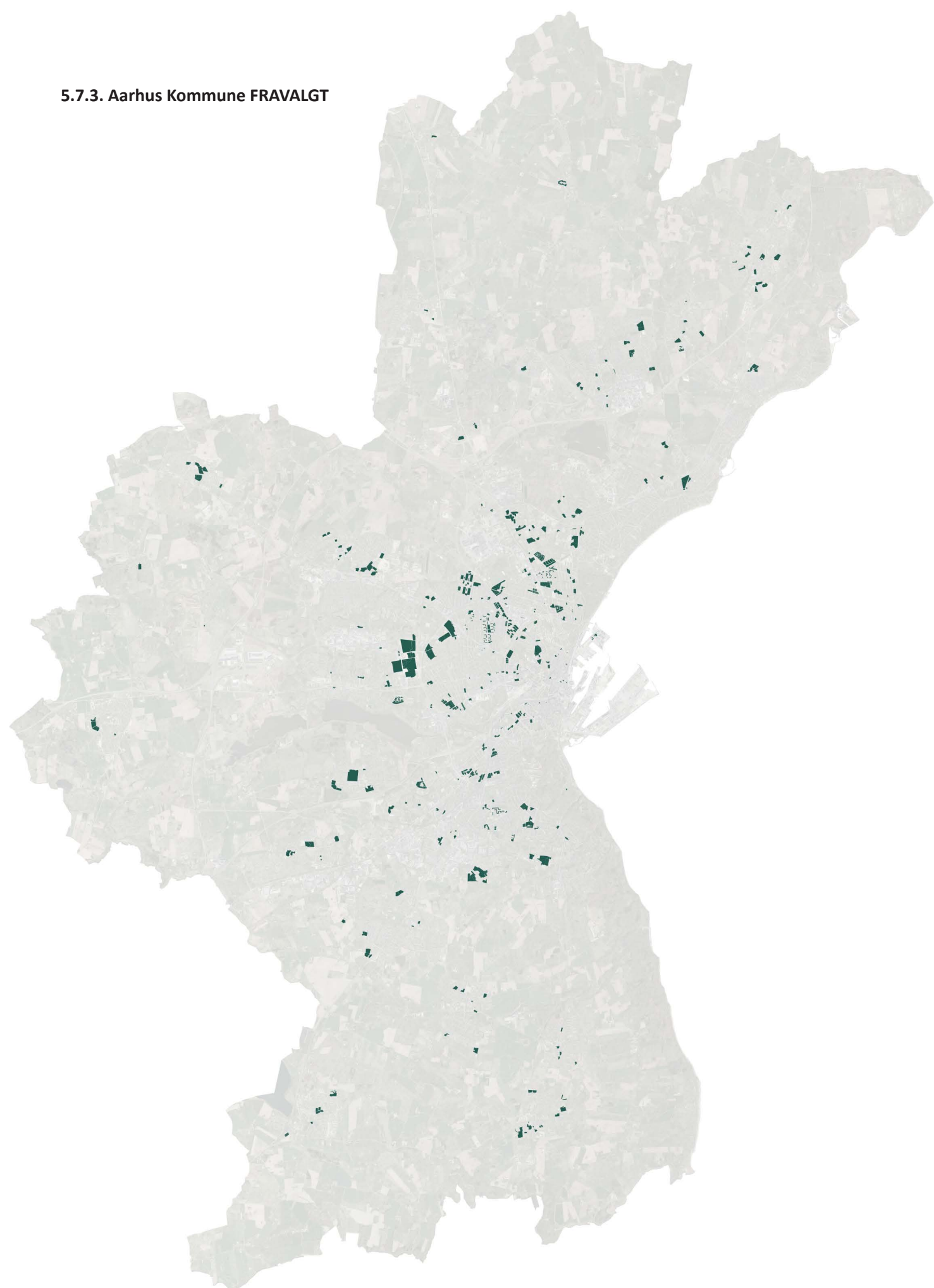


## 5.7.2. Aarhus Kommune ONFILL



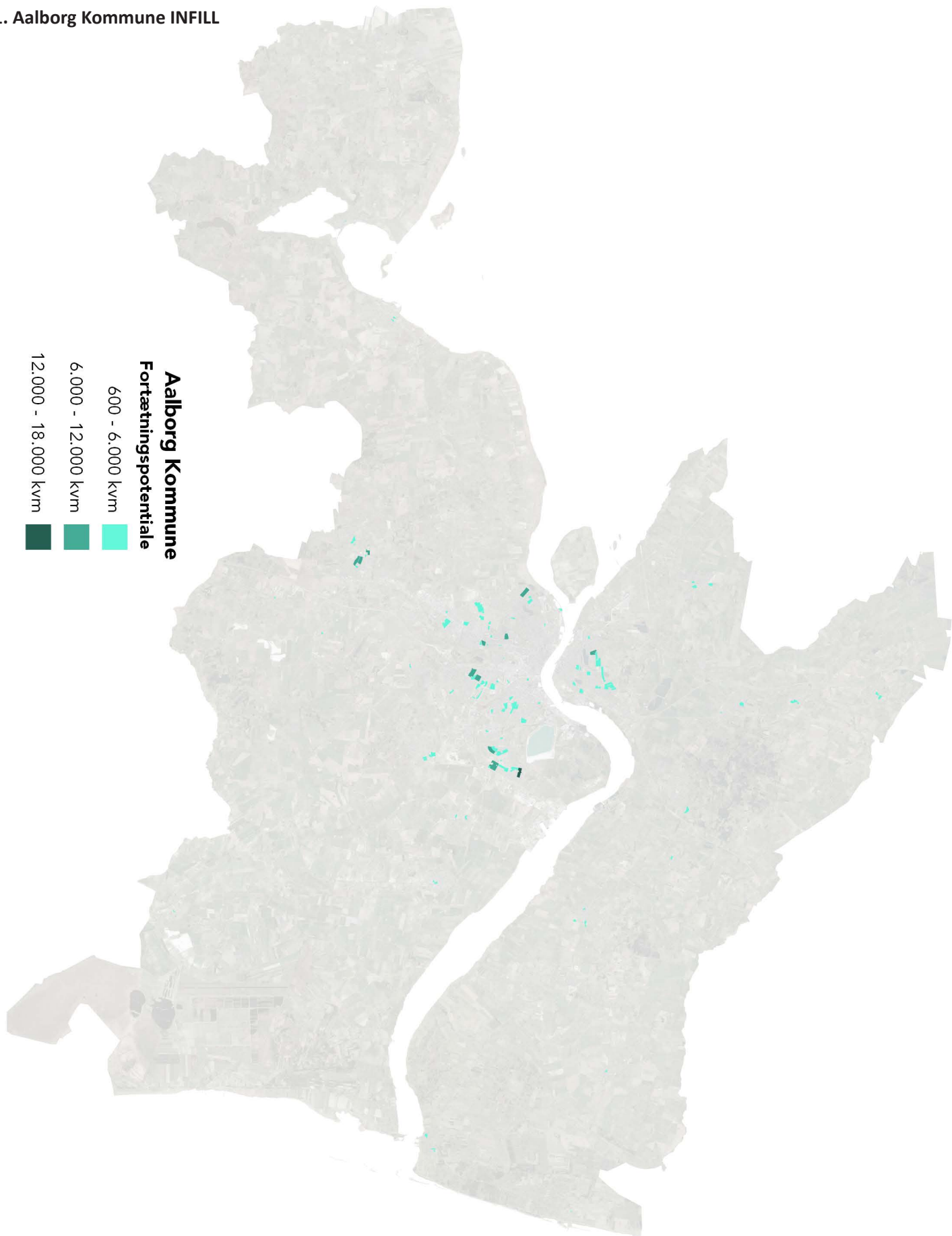
**Aarhus Kommune**  
**Fortætningspotentiale**  
600 - 6.000 kvm  
6.000 - 12.000 kvm  
12.000 - 18.000 kvm

### 5.7.3. Aarhus Kommune FRAVALGT

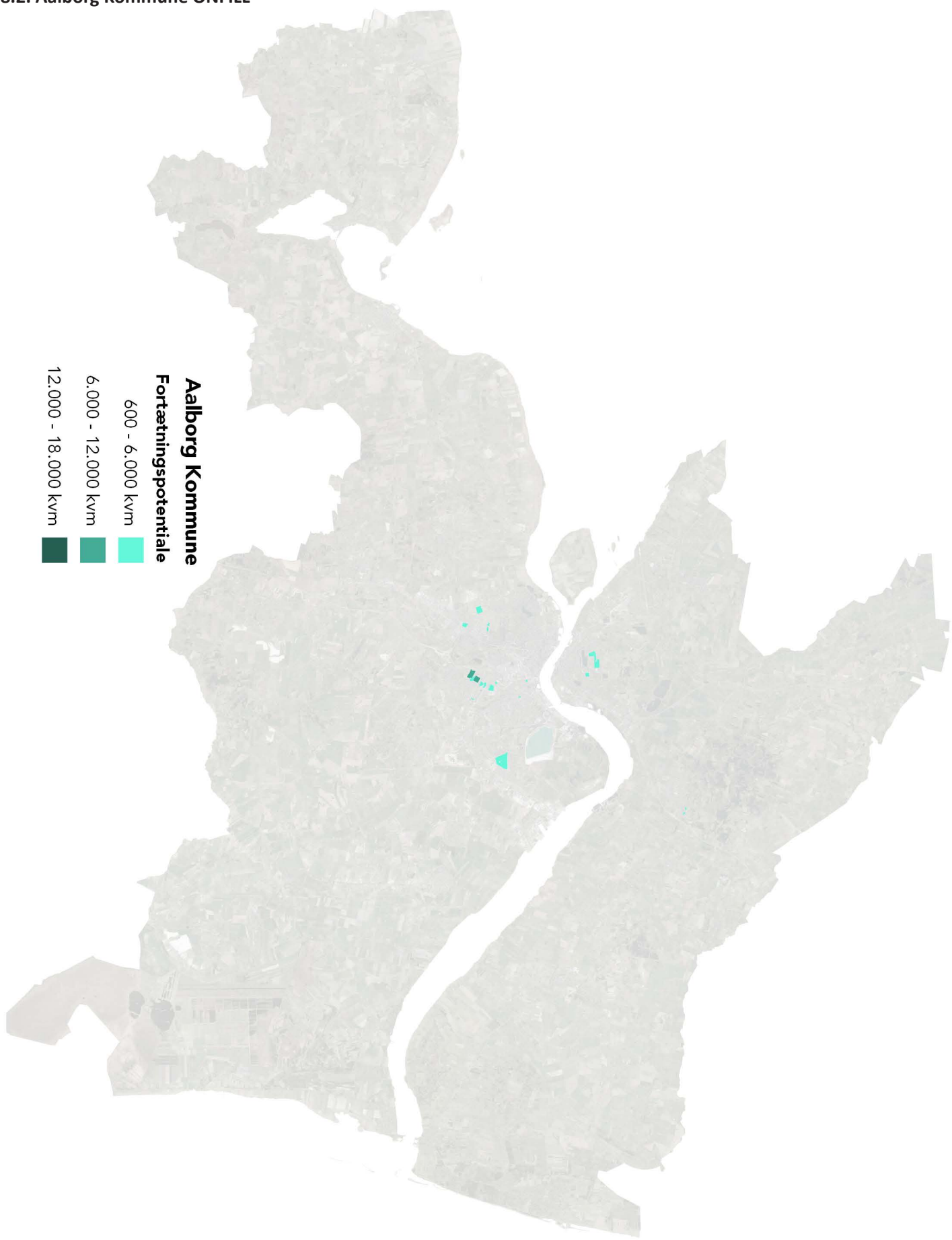




### 5.8.1. Aalborg Kommune INFILL

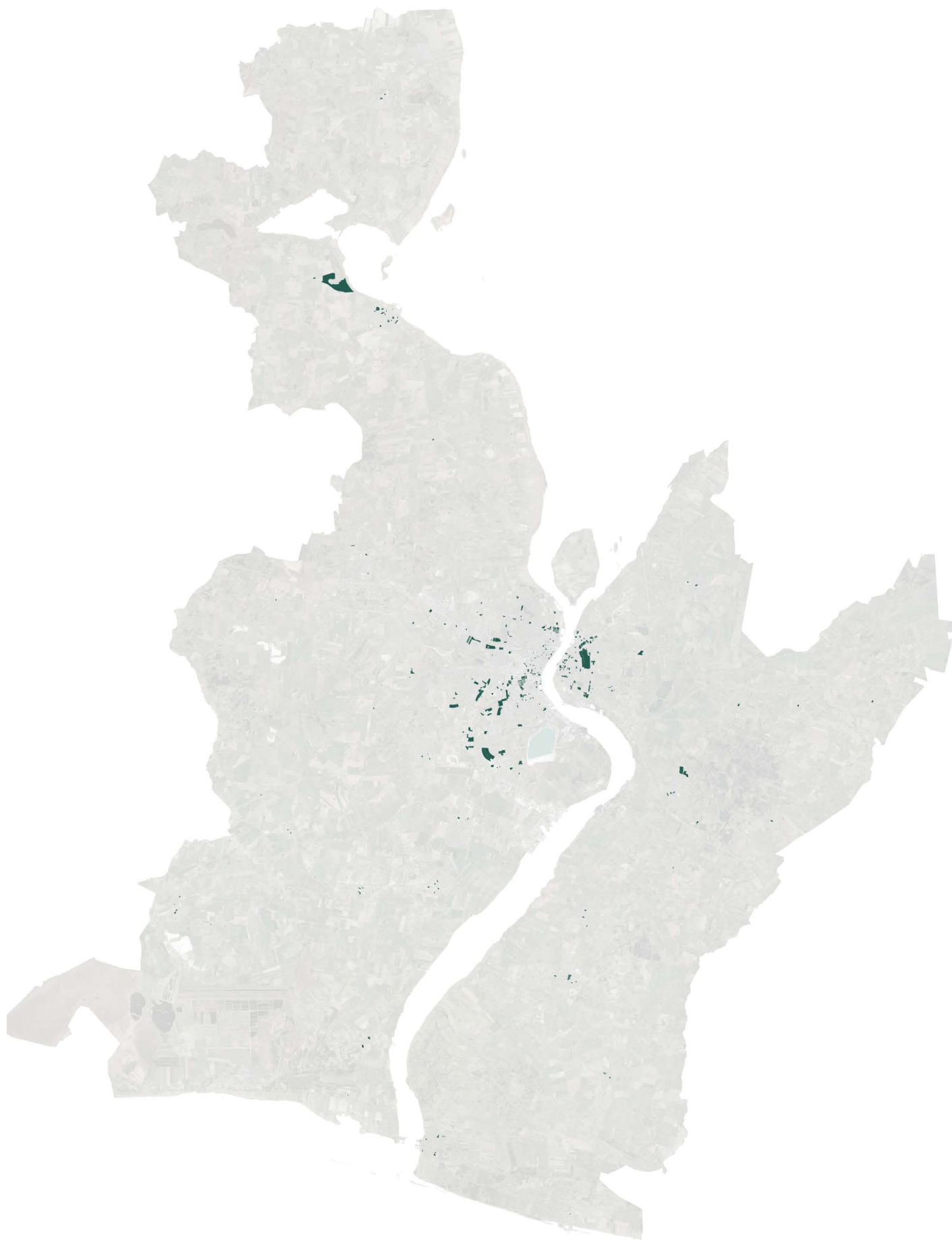


## 5.8.2. Aalborg Kommune ONFILL



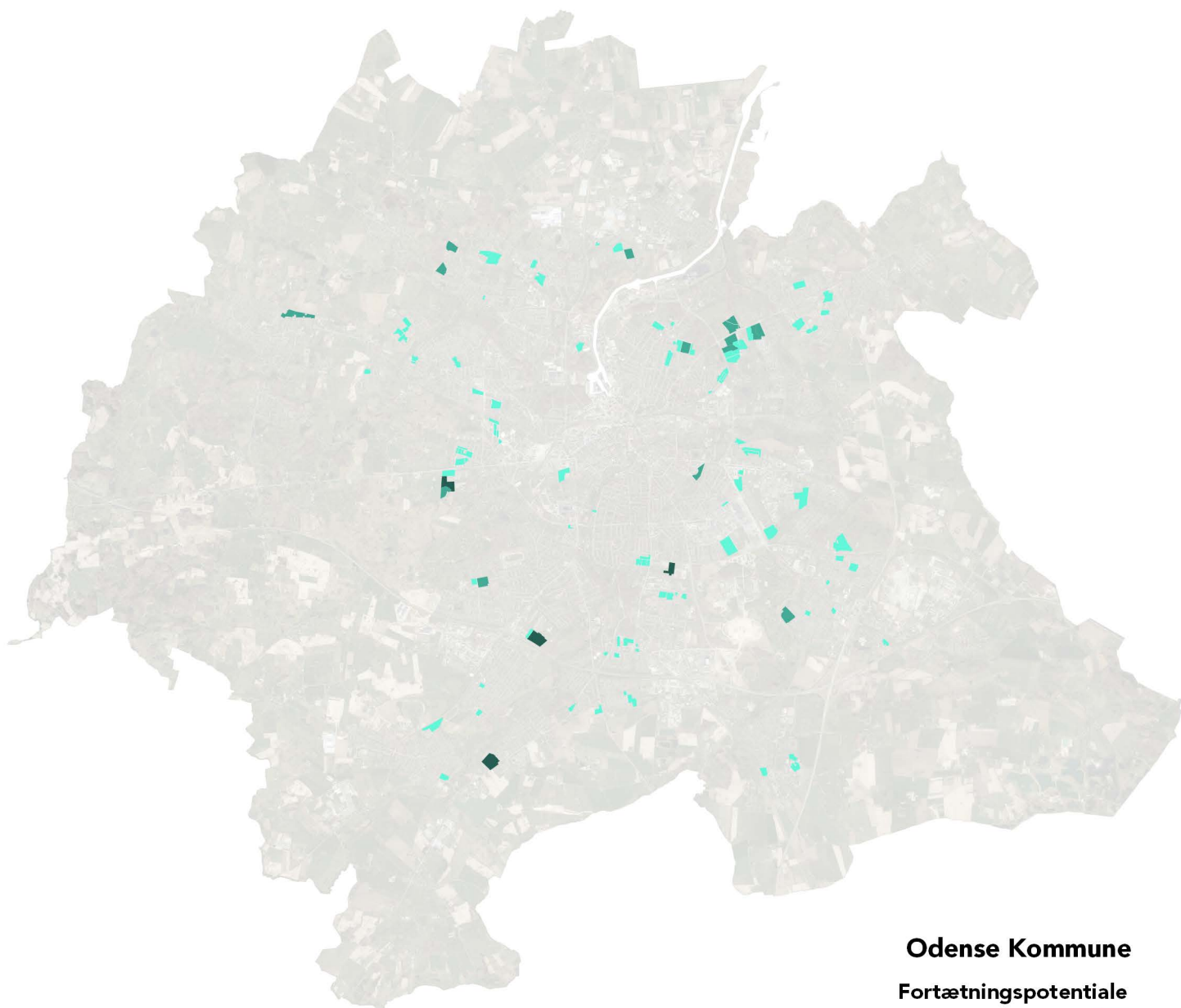
**Aalborg Kommune**  
**Fortætningspotentiale**  
600 - 6.000 kvm  
6.000 - 12.000 kvm  
12.000 - 18.000 kvm

### 5.8.3. Aalborg Kommune FRAVALGT





### 5.9.1. Odense Kommune INFILL

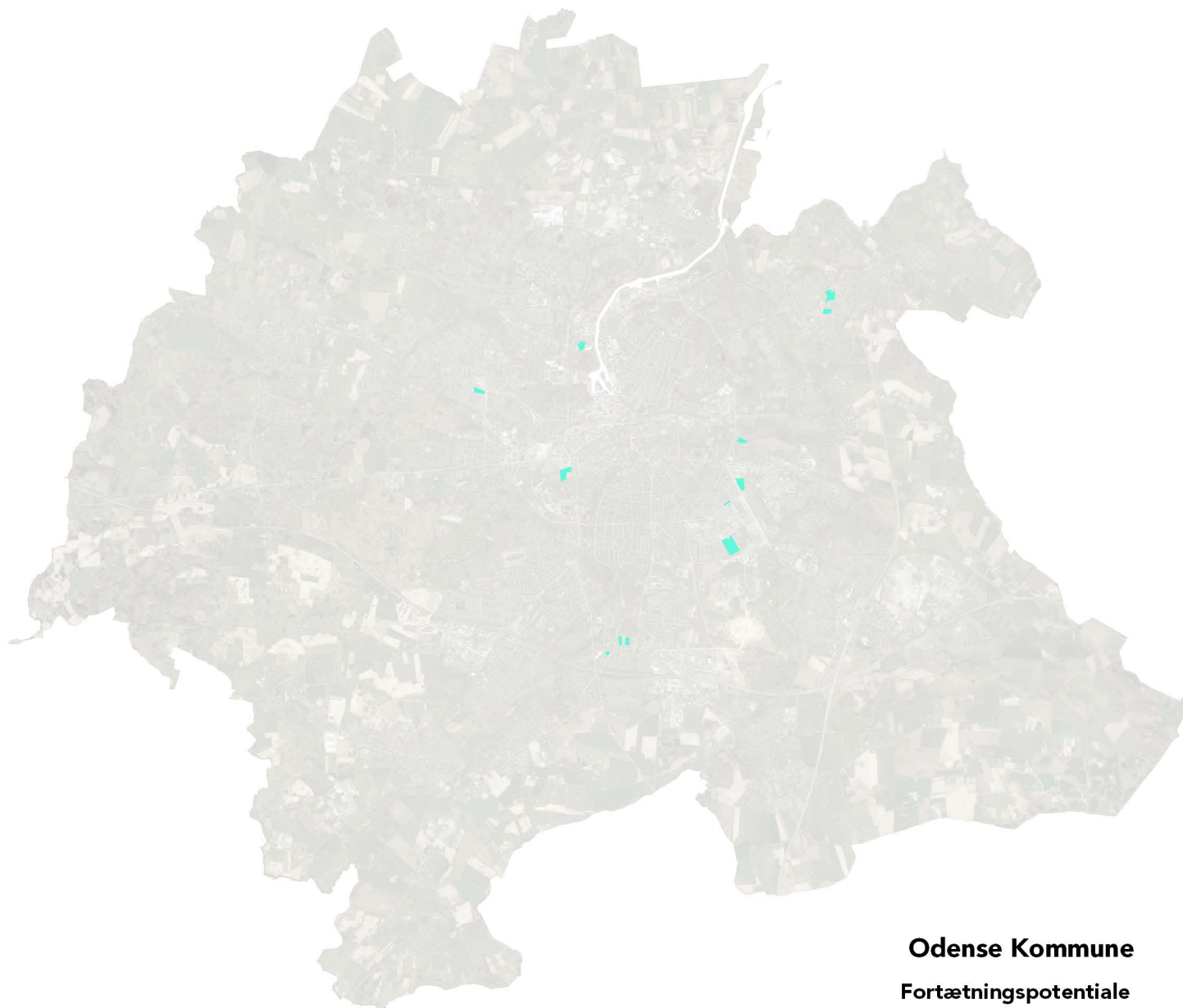


#### **Odense Kommune**

#### **Fortætningspotentiale**

- 600 - 6.000 kvm
- 6.000 - 12.000 kvm
- 12.000 - 18.000 kvm

## 5.9.2. Odense Kommune ONFILL



### Odense Kommune

#### Fortætningspotentiale

- 600 - 6.000 kvm 
- 6.000 - 12.000 kvm 
- 12.000 - 18.000 kvm 

### 5.9.3. Odense Kommune FRAVALGT

